



5432 shown with field finished cedar wood and optional stockton windows and spade hardware.

SPECIFICATIONS

Insulation Type

1-13/16" Polystyrene



R-value R-10.78

Backing Steel

Construction Type Heavy Duty

Wind Load Non Impact and Impact Rated

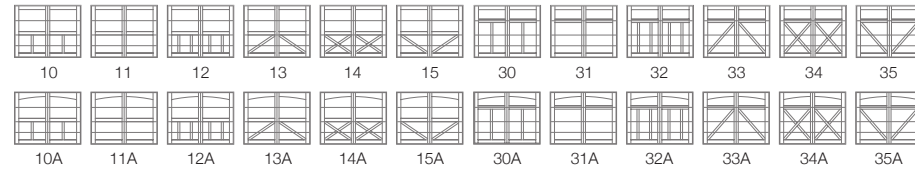
Warranty Limited Lifetime on sections
1 Year on Overlays
3 Years on Springs
6 Years on Hardware

Extended Coverage Appearance and Lifetime Package

Your Local Garage Door Professional

5400 WOOD OVERLAY CARRIAGE

CARRIAGE HOUSE DESIGNS



WOODS¹



¹ Wood types used are Western Red Cedar and Fijian Mahogany.

WINDOW DESIGNS

Single Row



Stockton



2-2 Piece Arched Stockton



4 Piece Arched Stockton



Madison



2-2 Piece Arched Madison

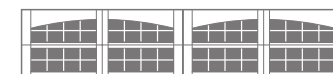


4 Piece Arched Madison

Double Row



Stockton



2-2 Piece Arched Stockton



4 Piece Arched Stockton



Madison



2-2 Piece Arched Madison



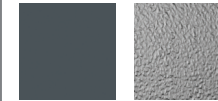
4 Piece Arched Madison

GLASS



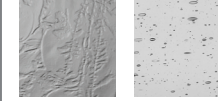
Plain

Frosted



Tinted

Obscure



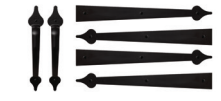
Glue Chip

Seeded

Plain is available as polycarbonate.

EXTERIOR HARDWARE

Permanent



Spade



Wrought Iron



Barcelona 1



Barcelona 2

Magnetic



Spade



Ashford



Clavos