

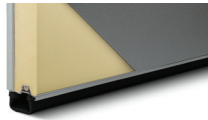


5633A shown in white with optional arched madison window design and wrought iron hardware.

SPECIFICATIONS

Insulation Type

1-7/8" Polyurethane



R-value

R-17.54

Backing

Steel

Construction Type

Heavy Duty

Wind Load

Non Impact and Impact Rated

Warranty

Limited Lifetime on sections
3 Years on Overlays
3 Years on Springs
6 Years on Hardware

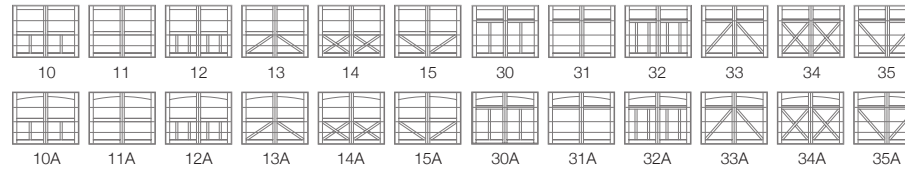
Extended Coverage

Appearance and Lifetime Package

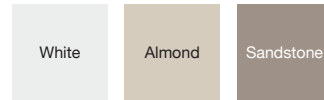
Your Local Garage Door Professional

5600 STEEL OVERLAY CARRIAGE

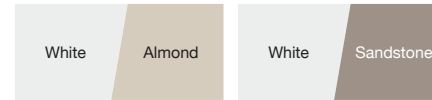
CARRIAGE HOUSE DESIGNS



COLORS¹



2-TONE COLORS¹



¹ Refer to your local C.H.I. Dealer for exact color match.

WINDOW DESIGNS

Single Row



Stockton



2-2 Piece Arched Stockton



4 Piece Arched Stockton



Madison



2-2 Piece Arched Madison



4 Piece Arched Madison

Double Row



Stockton



2-2 Piece Arched Stockton



4 Piece Arched Stockton



Madison



2-2 Piece Arched Madison



4 Piece Arched Madison

GLASS



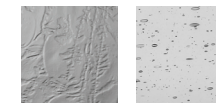
Plain

Frosted



Tinted

Obscure



Glue Chip

Seeded

Plain is available as polycarbonate.

EXTERIOR HARDWARE

Permanent



Spade



Wrought Iron



Barcelona 1



Barcelona 2

Magnetic



Spade



Ashford



Clavos