

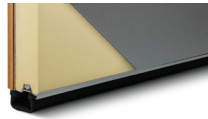


5731A shown with field-stained cedar wood and optional wrought iron hardware.

SPECIFICATIONS

Insulation Type

1-7/8" Polyurethane



R-value

R-18.03

Backing

Steel

Construction Type

Heavy Duty

Wind Load

Non Impact and Impact Rated

Warranty

Limited Lifetime on sections
1 Year on Overlays
3 Years on Springs
6 Years on Hardware

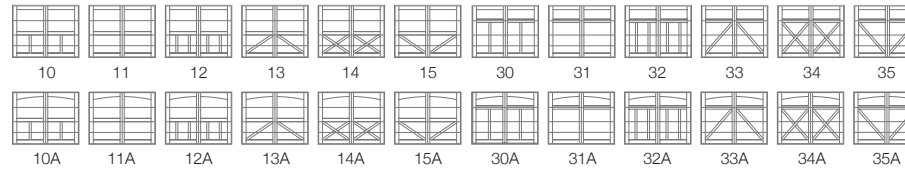
Extended Coverage

Appearance and Lifetime Package

Your Local Garage Door Professional

5700 WOOD OVERLAY CARRIAGE

CARRIAGE HOUSE DESIGNS



WOODS¹



¹ Wood types used are Western Red Cedar and Fijian Mahogany.

WINDOW DESIGNS

Single Row



Stockton



2-2 Piece Arched Stockton



4 Piece Arched Stockton



Madison

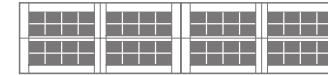


2-2 Piece Arched Madison

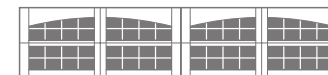


4 Piece Arched Madison

Double Row



Stockton



2-2 Piece Arched Stockton



4 Piece Arched Stockton



Madison



2-2 Piece Arched Madison



4 Piece Arched Madison

GLASS



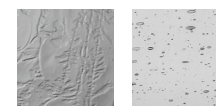
Plain

Frosted



Tinted

Obscure



Glue Chip

Seeded

Plain is available as polycarbonate.

EXTERIOR HARDWARE

Permanent



Spade



Wrought Iron



Barcelona 1



Barcelona 2

Magnetic



Spade



Ashford



Clavos